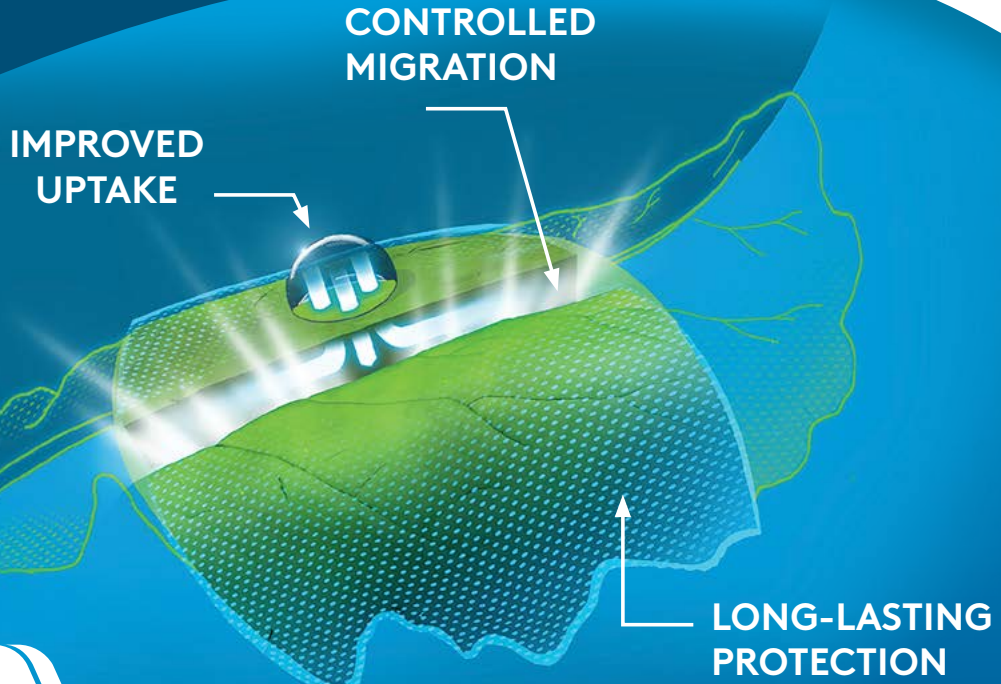


# The Proof is in the Petri



ADAMA



POWERED BY

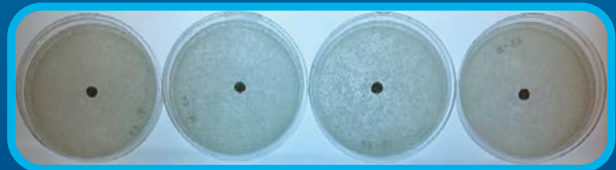
**Asorbital<sup>®</sup>**

FORMULATION TECHNOLOGY

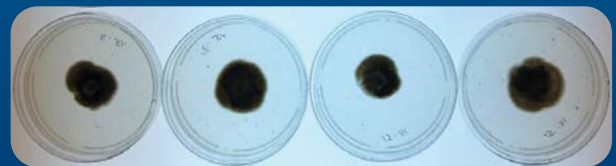
**The choice is clear:**  
Asorbital<sup>®</sup> powered fungicides significantly outperform competitors, enhancing penetration efficiency and controlled migration for superior crop protection.

The pathogen *Ascochyta fabae* strain IPH31 was isolated from a diseased faba bean plant in Saskatchewan. Germination assays were conducted on PDA plates with fungicides at specified rates. Analysis of growth and germination after 14 days showed significant differences, with SORATEL<sup>®</sup> demonstrating superior control compared to Proline.

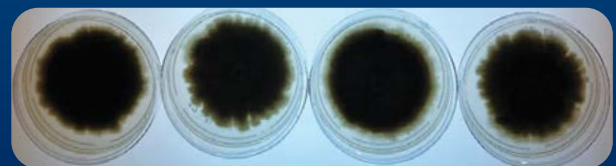
**SORATEL<sup>®</sup>** 150 g a.i /ha | 0.600 L/ha



**Proline 480 SC** 151 g a.i /ha | 0.315 L/ha



**Control**



Pathogen: *Ascochyta fabae*  
Source: Insight Plant Health - Fungicide Testing - growth and germination inhibition

**Click to learn more:**



Asorbital<sup>®</sup> and SORATEL<sup>®</sup> are registered trademarks of an ADAMA Group Company. All other products are trademarks of their respective companies. © 2024 ADAMA Agricultural Solutions Canada Ltd.

**Listen • Learn • Deliver**

[ADAMA.COM/Canada](https://ADAMA.COM/Canada)