

CUSTODIA®

Greener fields, greater yields

Your powerful fungicide for controlling foliar diseases in fodder and sugar beet

NEW
FUNGICIDE

28 DAY
WITHHOLDING
PERIOD



Unique mixture for robust leaf protection

Leaf quality in beet crops is increasingly recognised as important. Healthy leaves not only drive bulb yield, they increase the protein in the crop providing higher quality feed. Healthy leaves are also more palatable to stock, resulting in greater crop utilisation.

Foliar fungicide **CUSTODIA** features a unique mixture of active ingredients (tebuconazole and azoxystrobin), providing robust leaf protection. **CUSTODIA** is effective against beet foliar diseases powdery mildew, rust, and the main fungal pathogen *Cercospora* leaf spot, which causes significant yield losses if unchecked.

Withholding period provides greater grazing flexibility

CUSTODIA has a grazing withholding period of just 28 days, allowing for earlier access to beet crops than with existing market standard fungicides. This is critical when feed is tight.

New Zealand trials

Extensive trials were conducted over three seasons in Canterbury and the Waikato, highlighting **CUSTODIA's** robust efficacy for *Cercospora* leaf spot (see fig. 1 and 2), powdery mildew (see fig. 3) and rust (see fig. 4).

WHY CUSTODIA?

- Robust control of *Cercospora* leaf spot, powdery mildew and rust
- 28 days WHP for earlier access to crops than market standards

Leaf area infected - *Cercospora*

SUGAR BEET, WAIKATO 2016

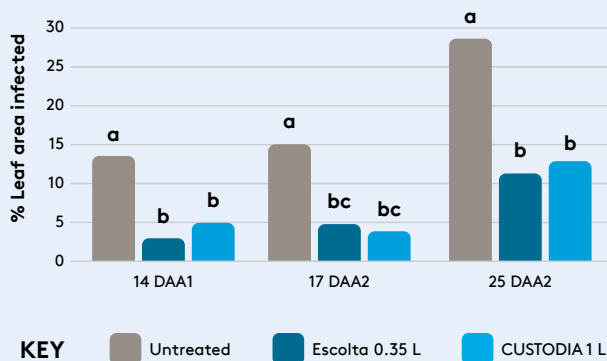


Fig. 1: Leaf area infected with *Cercospora*, 2 applications at 14-day interval, sugar beet, Waikato
Bars with the same letter are not significantly different.

Leaf area infected - *Cercospora*

FODDER BEET, HUNUA 2018

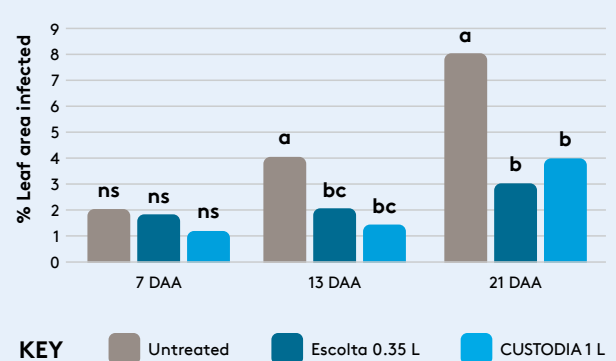


Fig. 2: Leaf area infected with *Cercospora*, 21 days after a single application, fodder beet, Hunua
Bars with the same letter are not significantly different.

Leaves infected Powdery mildew

FODDER BEET, SEFTON 2016

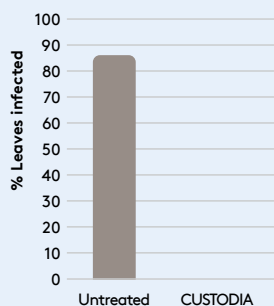


Fig. 3: Leaves infected with powdery mildew, 2 applications at 14-day interval, fodder beet, Sefton
No disease present in CUSTODIA treatment

Leaves infected Rust

FODDER BEET, SOUTHBRIDGE 2016

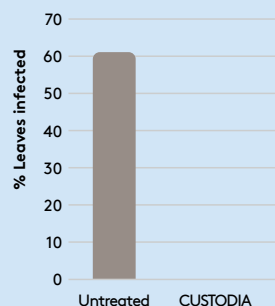


Fig. 4: Leaves infected with rust, 2 applications at 14-day interval, fodder beet, Southbridge
No disease present in CUSTODIA treatment

Healthy beet with ADAMA's extensive beet protection toolbox

CUSTODIA marks another important cornerstone of ADAMA's beet portfolio and complements its specially designed herbicide programme. The programme is based on a robust pre-emergence spray and follow-up to control any subsequent weeds. This not only gives highly effective weed control, but also buys more time in case of adverse weather and/or other unforeseen events.

ADAMA's herbicide programme comprises **GOLTIX® GOLD, GOLTIX WG HERBICIDE, TORERO™, ETHOSAT® HERBICIDE, RIFLE®**, and now **CUSTODIA**. All have been rigorously tested and refined to complement New Zealand growing conditions and beet varieties and are backed by robust trial results.

Want to know more?

Talk to your ADAMA representative to find out more on how to get a healthy beet crop with ADAMA.

How to apply?

Directions for use

While **CUSTODIA** has systemic activity, thorough coverage will support disease control. **CUSTODIA** is compatible with a range of commonly used fungicides and insecticides. For specific advice contact your ADAMA representative.

MAXIMUM APPLICATION RATE OF 1 L/HA CUSTODIA, MAXIMUM OF 2 APPLICATIONS PER SEASON

RATE: 1 L/ha

- Apply **CUSTODIA** when disease first becomes active in the crop. Make a further application no sooner than 14 days later, if required.
- Use 200-400 L of water/ha for ground-based applications and 50-100 L of water/ha for aerial applications.
- Do not harvest for feed or graze for **28 days after application.**



IMPORTANT

This brochure is not intended to replace the registered product labels. Always read labels carefully before using any product and follow label instructions.

For specialist advice in an EMERGENCY call 0800 734 607 (all hours).

Registered pursuant to the ACVM Act 1997. See www.foodsafety.govt.nz for registration conditions. Approved pursuant to the HSNO Act 1996. See www.epa.govt.nz for approval controls. Custodia, Ethosat, Goltix, Rifle and Torero are trademarks of an ADAMA Group Company. Escolta is a registered trademark of Bayer.

ADAMA New Zealand Ltd., 1/93 Bolt Road, Tahunanui, Nelson, 7011,
PO Box 1799, Nelson 7040, New Zealand
Head Office: 03 543 8275 nzinfo@adama.com www.adama.com