



Quali-Pro[®]

Prophesy Miticide



ADAMA

Simply. Grow. Together.



Quali-Pro® Prophecy Miticide

Generational mite management

Prophecy Miticide in brief

Prophecy is a contact miticide containing 500 g/L of the active ingredient Clofentezine. Prophecy provides a strong and new mode of action for generational management of Couch Mite (*Aceria cynodoniensis*) in all turfgrass management situations including but not limited to golf greens, tees and fairways, bowling greens, sports fields and racetracks.

Prophecy is also registered for the control of Twospotted Mite (*Tetranychus urticae*) in ornamental plant situations.

Key features and benefits of Prophecy Miticide

- Unique mode of action for the turf market – Group 10A
- New class of chemistry ideal for use with other miticides
- Works on the egg and early larval stages of the mite
- Long residual activity – up to 45 days
- Schedule 5 chemistry, reducing PPE requirements versus some other miticides
- Less restrictions around re-entry after application, when compared to some other miticides
- Safety to predatory mites and soft on beneficial insects, including Bees. Useful in an IPM program
- Versatile – can be used in both turf and ornamental situations.

How Prophecy Miticide works

Clofentezine is a specific acaricide with contact action, and long residual activity. It acts primarily by interfering with cell growth and differentiation during the final stages of embryonic (*ovicide*), and early larval development.

Prophecy mode of action in review

Active ingredient: Clofentezine

Concentration (g/L): 500 g/L SC

IRAC group: 10A

Group common name: Tetratine

Mode of action: Specific acaricide with contact action and long residual activity

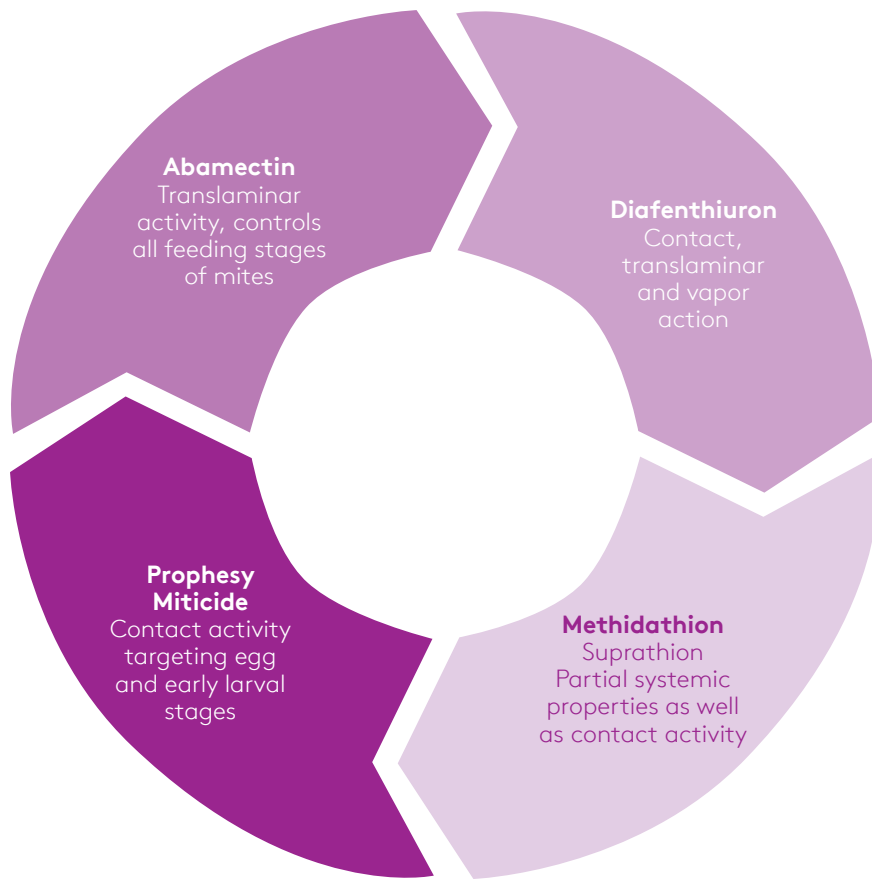
Effect on mites: Effects mites and the egg stage and early larval development

Residual activity: Up to 45 days





A new product in the Turf Mite management toolkit



Soft on predatory mites and beneficial insects (including bees)

Product	Impact on beneficial insects – Label statements
Prophecy Miticide	Has no deleterious effect on predatory mites and may be used in an integrated pest management programme.
Abamectin	Highly toxic to bees. Will kill bees foraging in or near treated turf or in hives, which are over sprayed or reached by spray drift. Residues to bees for several days after application.
Diafenthiuron	Dangerous to bees. DO NOT spray any plants in flower while bees are foraging.

Poison scheduling and mode of action comparative summary

Miticide	Active ingredient	Poison scheduling	Mode of action
Prophecy Miticide	Clofentezine	Caution – S5	10A
Abamectin (Various brands)	Abamectin	Poison – S6	6
Diafenthiuron (Various brands)	Diafenthiuron	Caution – S5	12A
Suprathion	Methidathion	Dangerous Poison – S7	1B

Use rates and key application information

Situation	Pests	Rate	Critical Comments
Couch Turf Including but not limited to golf greens, tees and fairways, bowling greens, sports fields and racetracks	Couch Mite (<i>Aceria cynodoniensis</i>)	500 mL/ha	Apply Quali-Pro® Prophecy in an early curative situation (after first symptoms are apparent). Best results are achieved if applied as populations begin to build rather than at the peak of population growth. OR Apply in a tank mix with the registered rate of a knockdown miticide when there are significant number of mites present, but before the infestation reaches an economically damaging level. Apply a maximum of 2 sprays, 10 - 14 days apart. DO NOT apply two consecutive sprays of Quali-Pro® Prophecy unless mixed with a knockdown miticide e.g. abamectin.
Ornamentals	Twospotted Mite (<i>Tetranychus urticae</i>)	30 mL/100 L In a tank mix with the registered rate of a knockdown miticide	Apply this tank mix when there are significant numbers of motile mites present but before infestation reaches an economically damaging level. DO NOT use this product until careful checking of mites/predators indicates that control measures are necessary. DO NOT apply this product, or the ovicide <i>hexythiazox</i> more than once per year as over-use will lead to mite resistance.



Turf

Apply by ground boom sprayer, low pressure hand wand or hand gun sprayer. To be effective Prophecy requires thorough spray coverage. Ensure that equipment is properly calibrated to give an even distribution at the correct volume. Application volume should be adequate to ensure thorough and even coverage of turf leaves with penetration into the crowns.

Total application volume should be 300 to 500 L/ha. Use coarse droplets (e.g. Air Induction flat fan 025 to 04 nozzles).

Ornamentals

Use adequate water to ensure thorough coverage of plants depending on spray equipment used and growth stage.

Clofentezine is most effective in mite management when applied at the first sign of mite activity and egg laying. At that time, the susceptible female mite, egg and first stage mite largely or totally make up the population.

If a high population of adults mites are present at the time of application, Prophecy should be tank mixed with an adult miticide.



Couch Mite

Key Information on Couch Mite

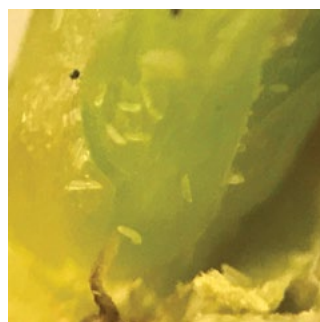
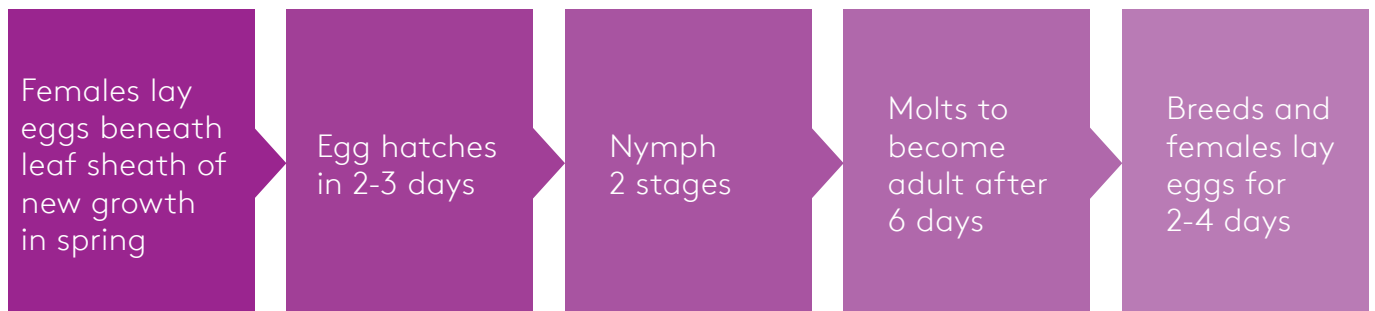
Scientific name: *Aceria cynodoniensis*

- These are tiny mites about 0.2 mm in length
- They are translucent and hard to see even under a microscope, though a dark background helps
- They have 2 pairs of legs, where other mites have four pairs of legs
- They normally cause "Witches' Broom" rosetting at the runner nodes.

Visible Symptoms of Mite Damage

- Distortion of terminal growing points is generally a clear sign of mite damage, but can also be confused with herbicide damage
- As an infestation increases over time, the terminal shoots may turn black and die completely
- Runners become short and distorted
- Root development is impeded and runners "porpoise" without rooting down
- Turf which typically runs and knits becomes open and clumpy with shortened runners
- Affected turf is more easily moisture stressed
- Turf which fails to knit produces a high percentage of broken rolls (often greater than 30%) in turf production
- On sports surfaces the surface quality declines.

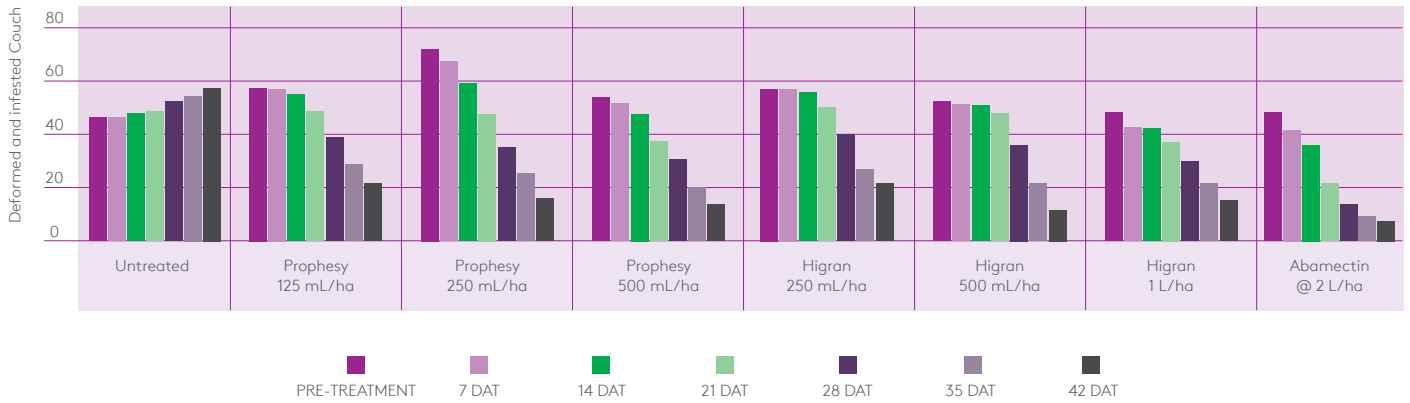
Lifecycle Chart



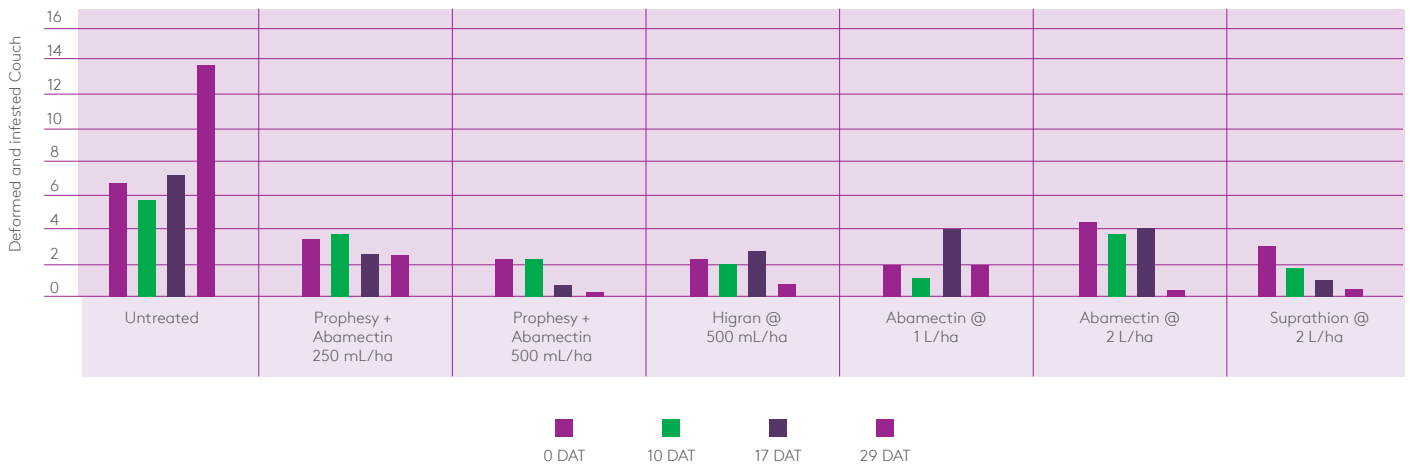
Photos courtesy of Ramiro Martinez: Amgrow Pty Ltd.

Australian field trial research with Prophesy Miticide on couch mite

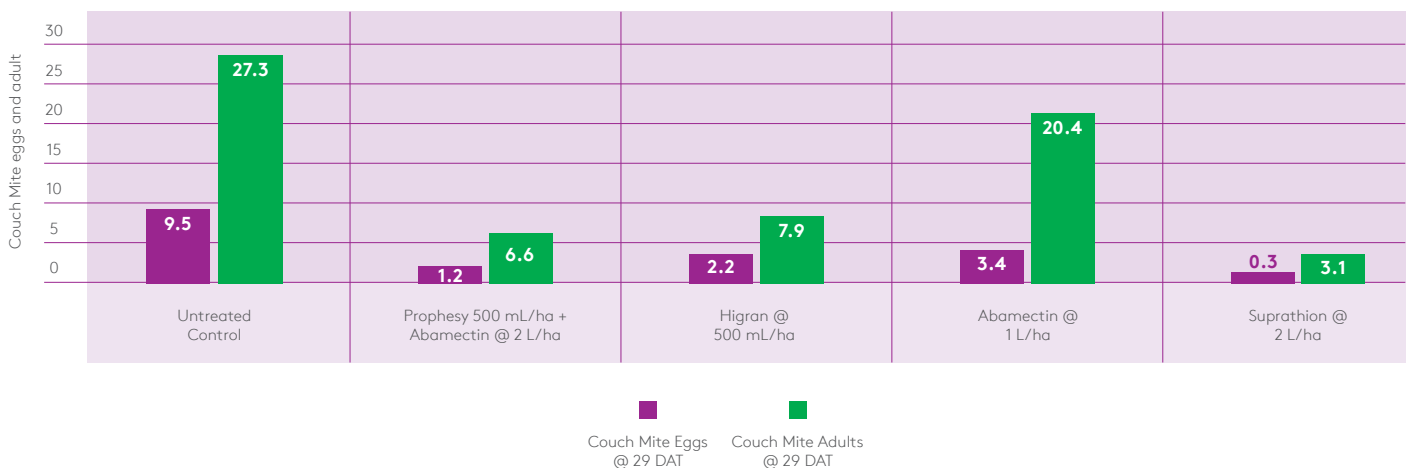
Westgate research: deformed and infested couch terminal counts before and following treatment with several miticides: Terrey Hills Country Club, January 2017



G-Censeo research: deformed and infested couch terminal counts before and following treatment with several miticides: Anglican Church Grammar School, December, 2016



G-Censeo research: couch mite eggs and adult counts following treatment with several miticides: Anglican Church Grammar School, December, 2016



More Information

Adama Australia Pty Ltd.

www.adama.com

www.turfalert.com

Phone: (02) 9431 7800

Fax: (02) 9431 7700

Level 1, Building B 207 Pacific Highway,

St Leonards NSW 2065 Australia

Email: peter.kirby@adama.com



QUALI-PRO

For more information visit: adama.com

For Customer Enquiries: **1800 4 ADAMA**

© Registered trademarks of an Adama Agricultural Solutions Ltd Company * Registered Trademarks
Please note: This information is not intended to replace the product label. Always read the complete product label appearing on the container before opening or using products.